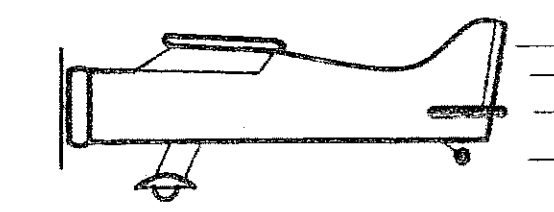
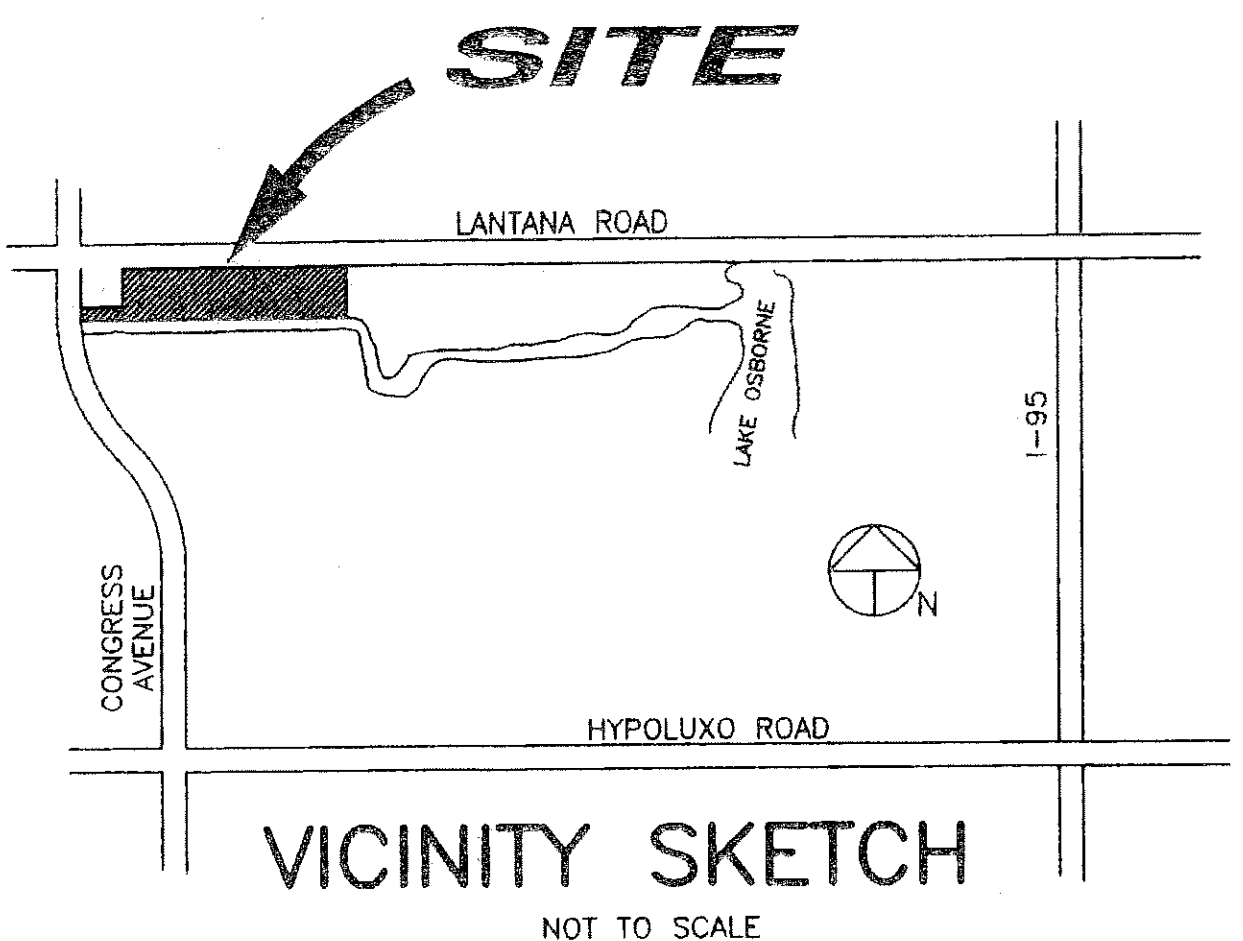


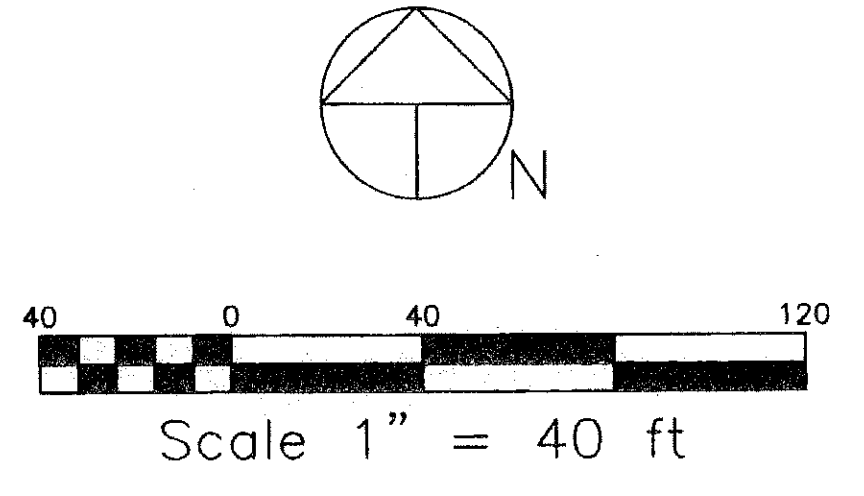
67

SHEET 2 OF 2



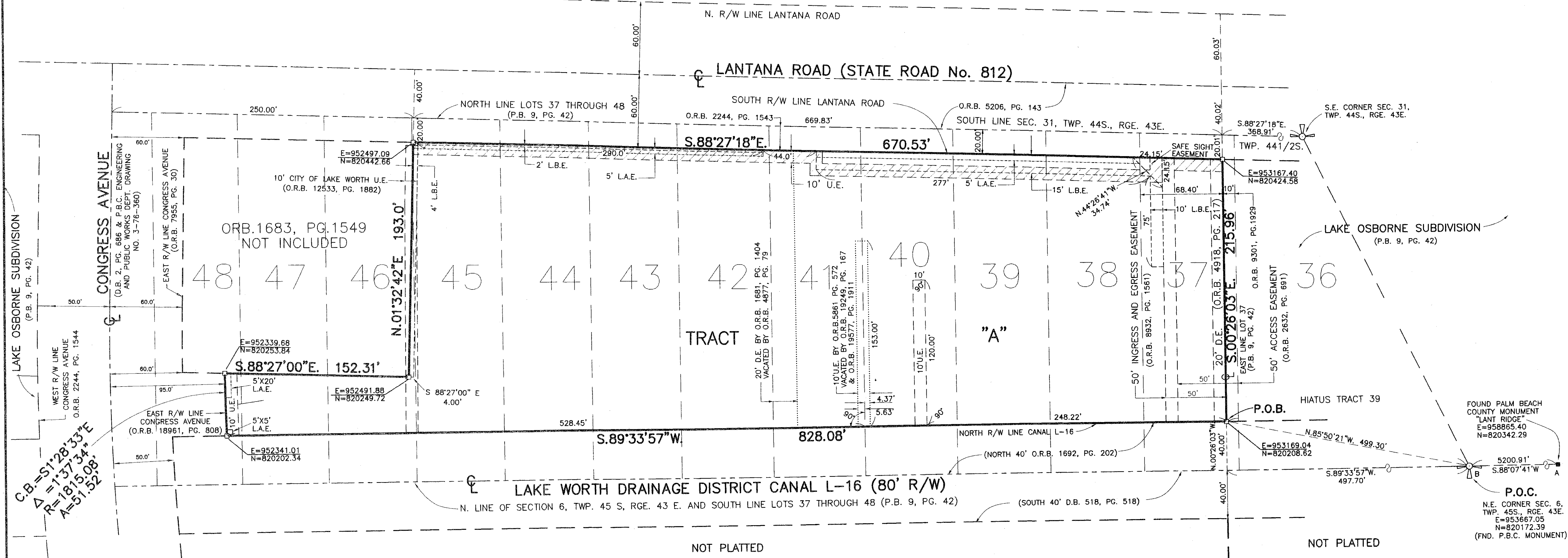
AIRPORT PLAZA

Being a replat of a portion of the Plat of Lake Osborne Subdivision, as recorded in Plat Book 9, Page 42, Public Records of Palm Beach County, Florida. Lying in Hiatus Tract 39, Township 44 1/2 South, Range 43 East, Palm Beach County, Florida, October, 2006



PLAT OF SUBDIVISION OF S.E. 1/4 OF SECTION 31, TOWNSHIP 44 SOUTH, RANGE 43 EAST (P.B. 6, PG. 61)

PLAT OF SUBDIVISION OF S.E. 1/4 OF SECTION 31, TOWNSHIP 44 SOUTH, RANGE 43 EAST (P.B. 6, PG. 61)



SUBDIVISION AIRPORT PLAZA
 PAGE 67
 BOOK 104
 RECORDING DATE
 RECORDING OFFICE
 RECORDING NUMBER
 ZIP CODE 33406
 DATE
 DRAWN BY
 CHECKED BY
 APPROVED BY

ABBREVIATIONS & SYMBOLS

1. □ = Denotes Permanent Reference Monuments (P.R.M.'s). Stamped P.R.M. L.S. # 3357.	13. A = Arc Length.
2. Ⓞ = Centerline.	14. Δ = Central Angle.
3. R/W = Right of Way	15. R = Radius.
4. P.B. = Plat Book.	16. C.B. = Chord Bearing.
5. P.G.(S) = Pages.	17. O.R.B. = Official Record Book.
6. SEC. = Section.	18. R.P.B. = Road Plat Book.
7. TWP. = Township.	19. L.A.E. = Limited Access Easement.
8. RGE. = Range.	20. P.O.C. = Point of Commencement.
9. U.E. = Utility Easement.	21. P.O.B. = Point of Beginning.
10. D.E. = Drainage Easement.	22. P.B.C. = Palm Beach County.
11. E = "E coordinate", states the given position of a point on the earth's surface (expressed in feet and decimals of a foot) in an East and West direction.	23. FND. = Found.
12. N = "N coordinate", states the given position of a point on the earth's surface (expressed in feet and decimals of a foot) in a North and South direction.	24. L.B.E. = Landscape Buffer Easement.
	25. D.B. = Deed Book.

PLAT OF AIRPORT PLAZA

WALLACE SURVEYING
CORP. LICENSED BUSINESS # 4589
5553 VILLAGE BOULEVARD, WEST PALM BEACH, FLORIDA 33407 • (561) 840-4551

FIELD:	JOB NO.: 95-1233 "D"	T.B.	PG.
OFFICE: M.B.	DATE: JULY, 2004	DWG. NO. 95-1233-3	
CKD:	REF:	SHEET 2 OF 2	